

Map Details

- Project Components
- - - Navigational Fairways
- /// Anchorage Areas
- Counties

1 inch = 50 miles

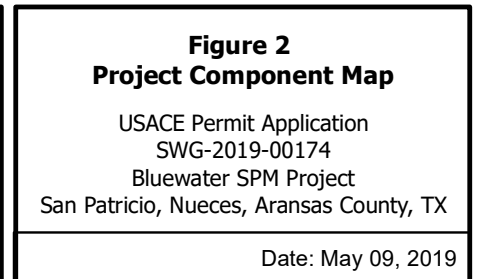
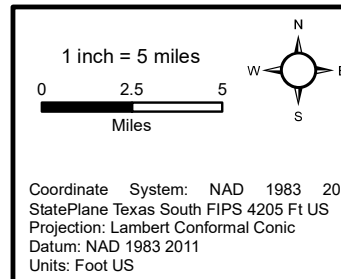
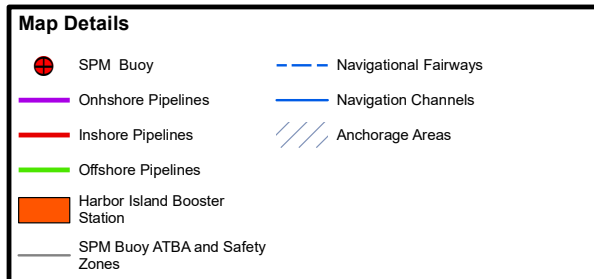
0 25 50 Miles

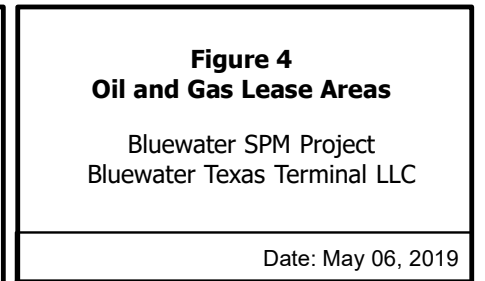
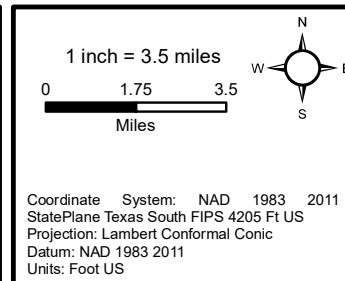
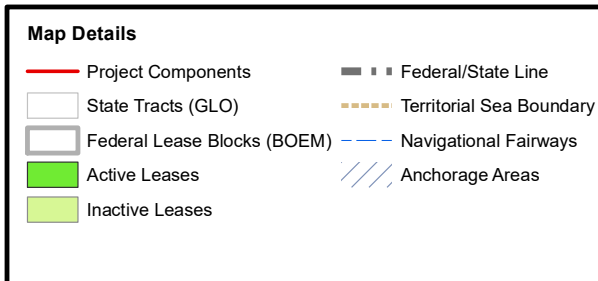
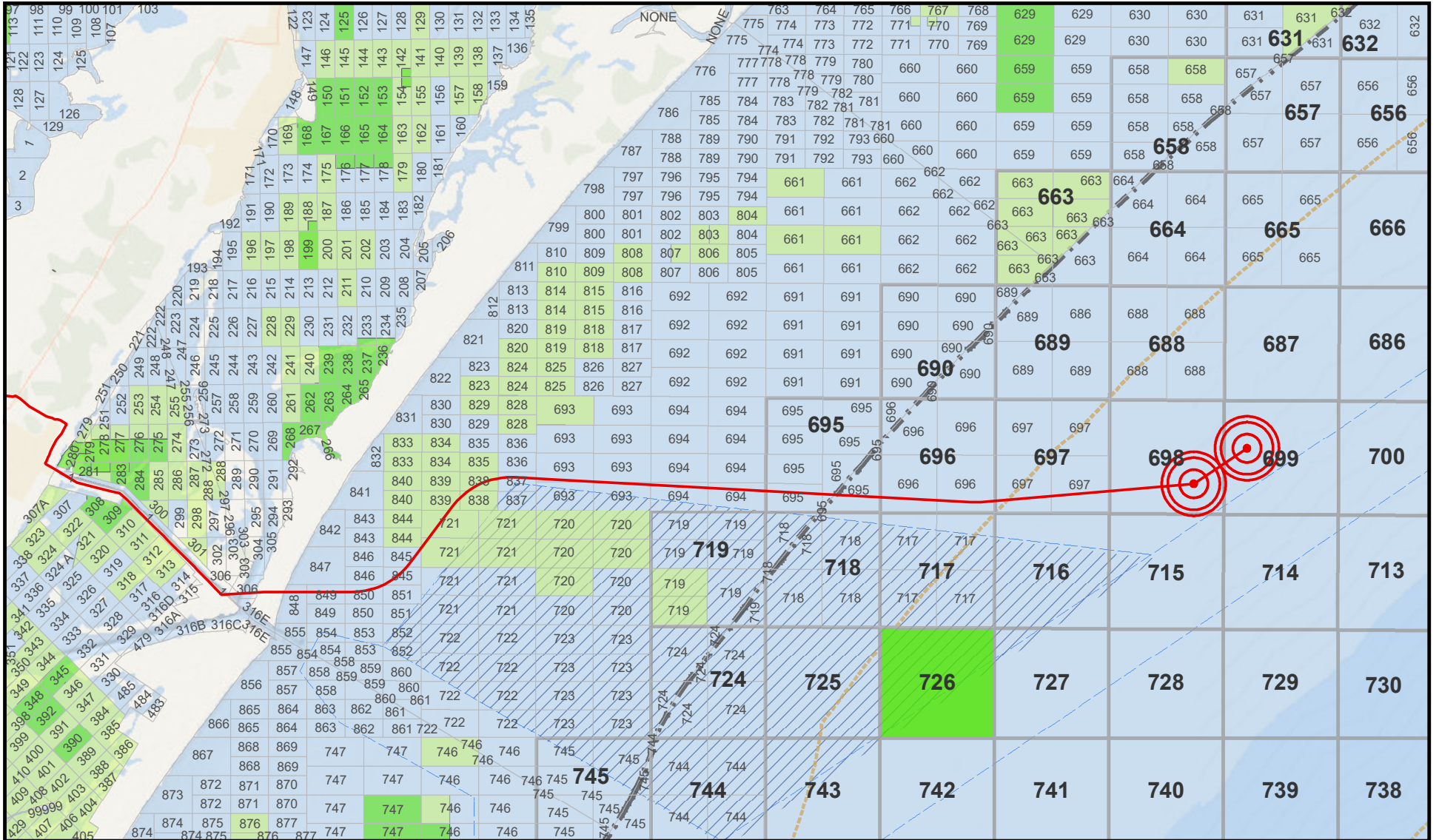
Coordinate System: NAD 1983 2011
 StatePlane Texas South FIPS 4205 Ft US
 Projection: Lambert Conformal Conic
 Datum: NAD 1983 2011
 Units: Foot US

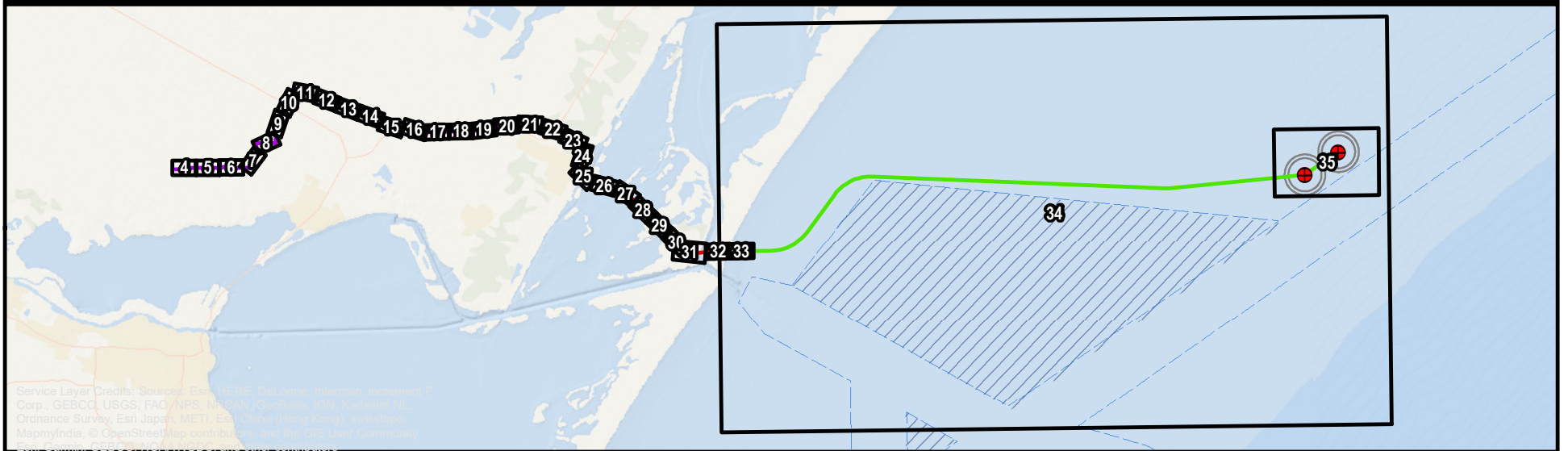
Figure 1
Project Vicinity Map

USACE Permit Application
 SWG-2019-00174
 Bluewater SPM Project
 San Patricio, Nueces, Aransas County, TX

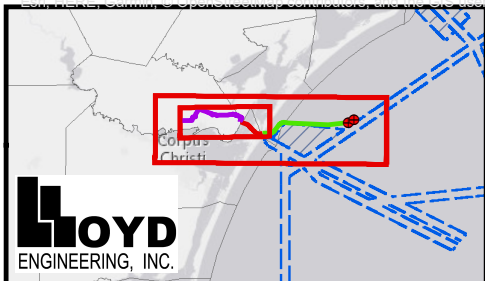
Date: May 09, 2019







Service Layer Credits: Sources: Esri, DeLorme, Intermap, increment P Corp., GEBCO, USGS, FAO, NPS, NRC, NPS, Esri, Swisstopo, GEBCO, Ordnance Survey, Esri Japan, METI, Esri, Swisstopo, GEBCO, MapmyIndia, © OpenStreetMap contributors, and the GIS User Community, Esri, Garmin, GEBCO, NOAA, NGA, and others.



Map Details

	Figure Index		Offshore Pipelines
	SPM Buoy System		SPM Buoy ATBA and Safety Zones
	Onshore Pipelines		Navigational Fairways
	Inshore Pipelines		Anchorage Areas

1 inch = 6 miles

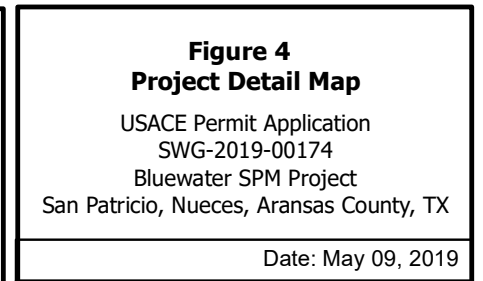
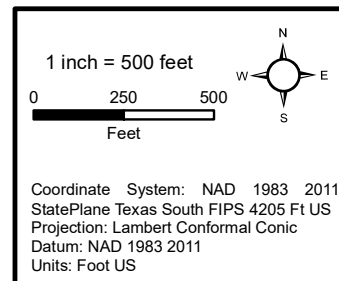
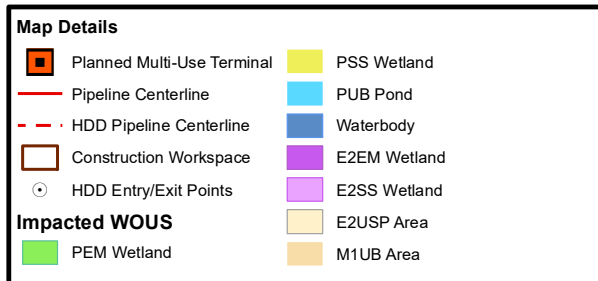
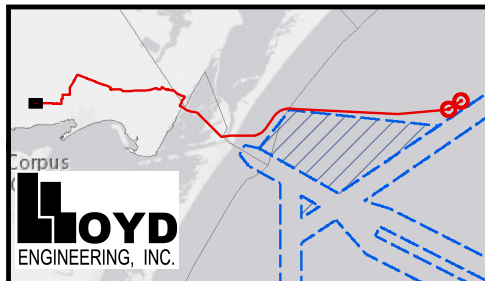
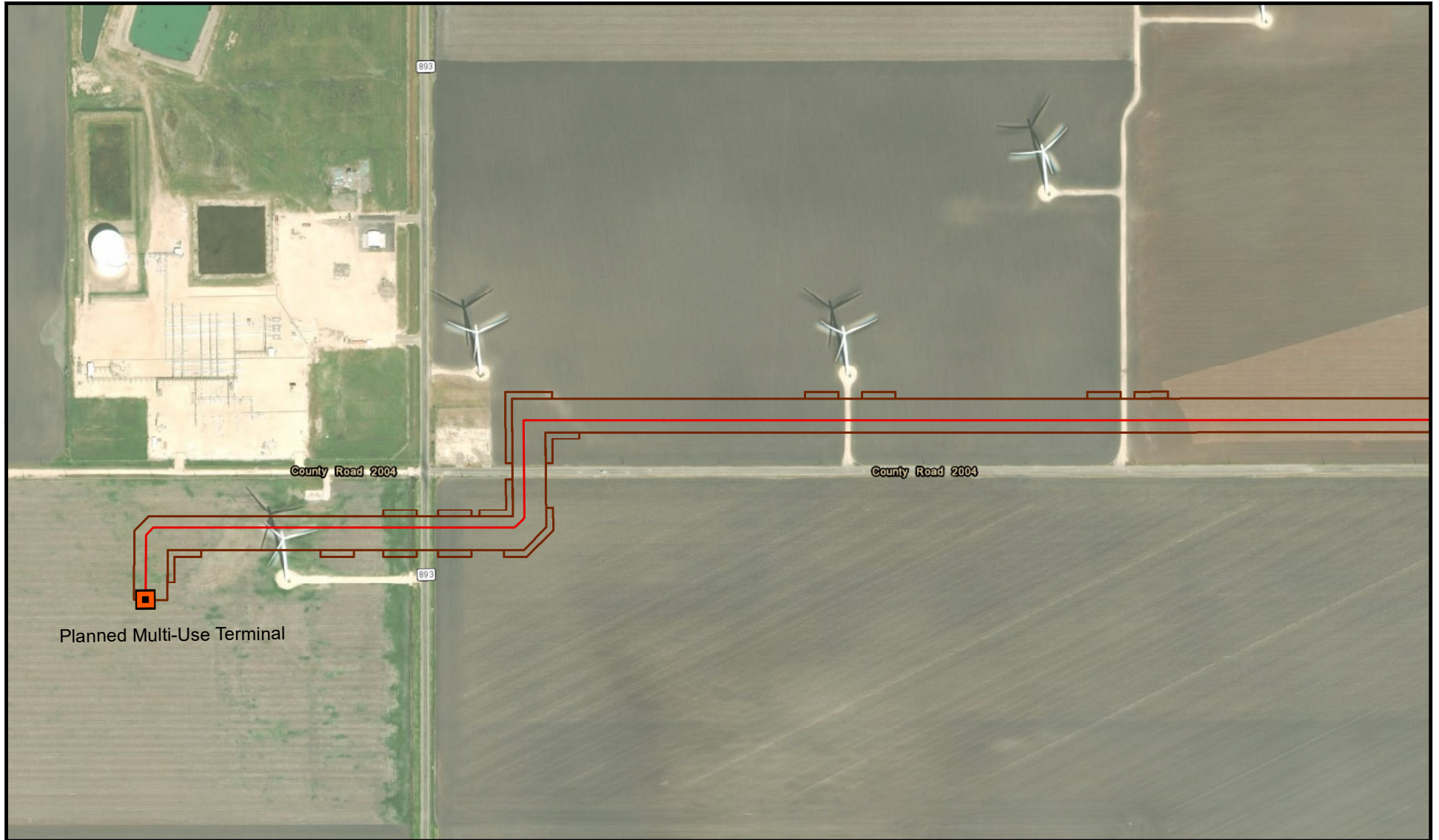
Miles

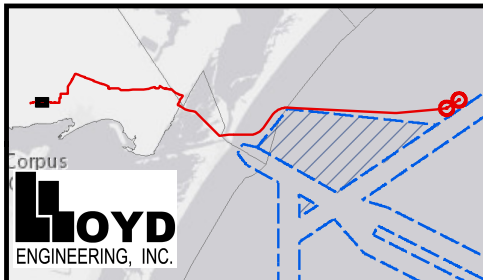
Coordinate System: NAD 1983 HARN
 StatePlane Texas South FIPS 4205 Feet
 Projection: Lambert Conformal Conic
 Datum: North American 1983 HARN
 Units: Foot US

Figure 3
Project Detail Map Figure Index

USACE Permit Application
 SWG-2019-00174
 Bluewater SPM Project
 San Patricio, Nueces, Aransas County, TX

Date: May 09, 2019





Map Details

○ HDD Entry/Exit Points	Waterbody
— Pipeline Centerline	E2EM Wetland
- - - HDD Pipeline Centerline	E2SS Wetland
Impacted WOUS	E2USP Area
PEM Wetland	M1UB Area
PSS Wetland	Construction Workspace
PUB Pond	

1 inch = 500 feet

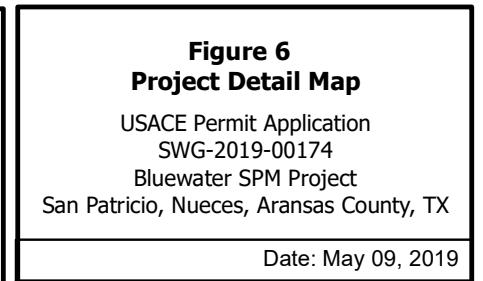
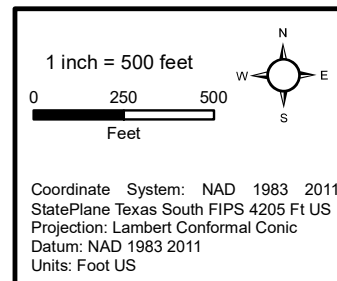
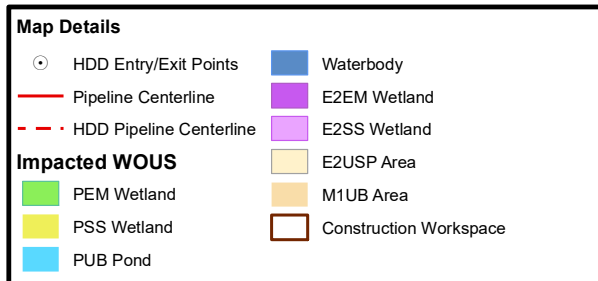
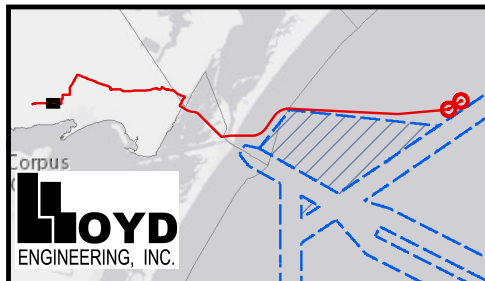
Feet

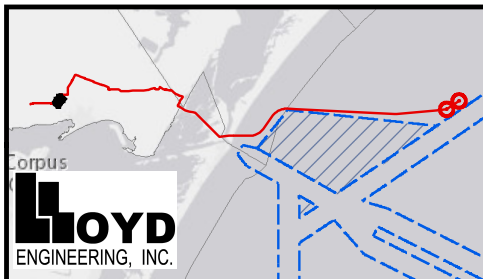
Coordinate System: NAD 1983 2011
 StatePlane Texas South FIPS 4205 Ft US
 Projection: Lambert Conformal Conic
 Datum: NAD 1983 2011
 Units: Foot US

Figure 5
Project Detail Map

USACE Permit Application
 SWG-2019-00174
 Bluewater SPM Project
 San Patricio, Nueces, Aransas County, TX

Date: May 09, 2019





Map Details

○ HDD Entry/Exit Points	Waterbody
— Pipeline Centerline	E2EM Wetland
- - - HDD Pipeline Centerline	E2SS Wetland
Impacted WOUS	E2USP Area
PEM Wetland	M1UB Area
PSS Wetland	Construction Workspace
PUB Pond	

1 inch = 500 feet

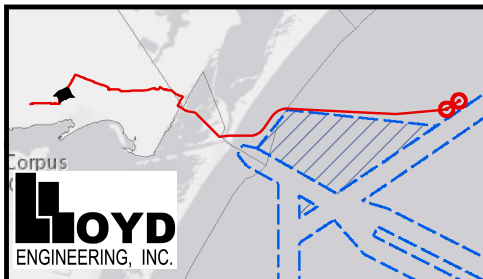
Feet

Coordinate System: NAD 1983 2011
 StatePlane Texas South FIPS 4205 Ft US
 Projection: Lambert Conformal Conic
 Datum: NAD 1983 2011
 Units: Foot US

Figure 7
Project Detail Map

USACE Permit Application
 SWG-2019-00174
 Bluewater SPM Project
 San Patricio, Nueces, Aransas County, TX

Date: May 09, 2019



LOYD
ENGINEERING, INC.

Map Details

HDD Entry/Exit Points	Waterbody
Pipeline Centerline	E2EM Wetland
HDD Pipeline Centerline	E2SS Wetland
Impacted WOUS	E2USP Area
PEM Wetland	M1UB Area
PSS Wetland	Construction Workspace
PUB Pond	

1 inch = 500 feet

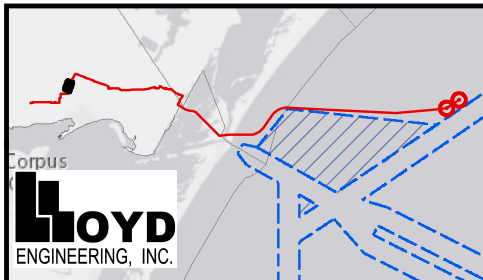
Feet

Coordinate System: NAD 1983 2011
 StatePlane Texas South FIPS 4205 Ft US
 Projection: Lambert Conformal Conic
 Datum: NAD 1983 2011
 Units: Foot US

Figure 8
Project Detail Map

USACE Permit Application
 SWG-2019-00174
 Bluewater SPM Project
 San Patricio, Nueces, Aransas County, TX

Date: May 09, 2019



Map Details

HDD Entry/Exit Points	Waterbody
Pipeline Centerline	E2EM Wetland
HDD Pipeline Centerline	E2SS Wetland
Impacted WOUS	E2USP Area
PEM Wetland	M1UB Area
PSS Wetland	Construction Workspace
PUB Pond	

1 inch = 500 feet

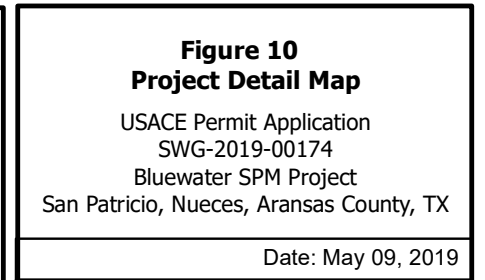
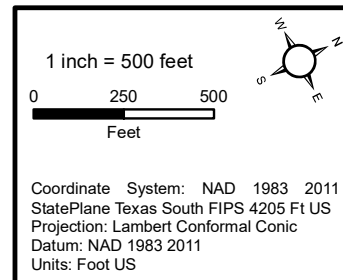
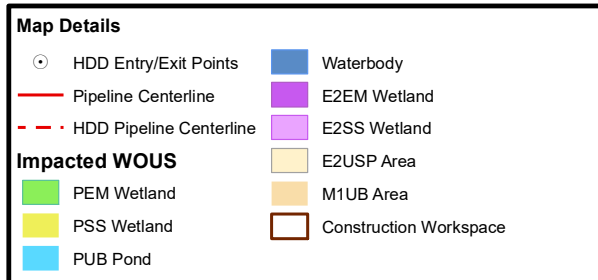
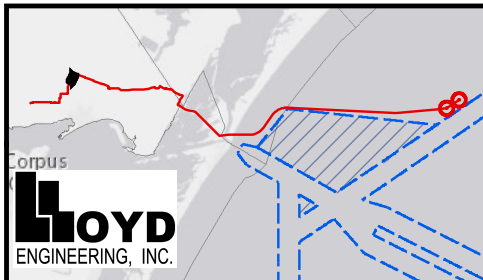
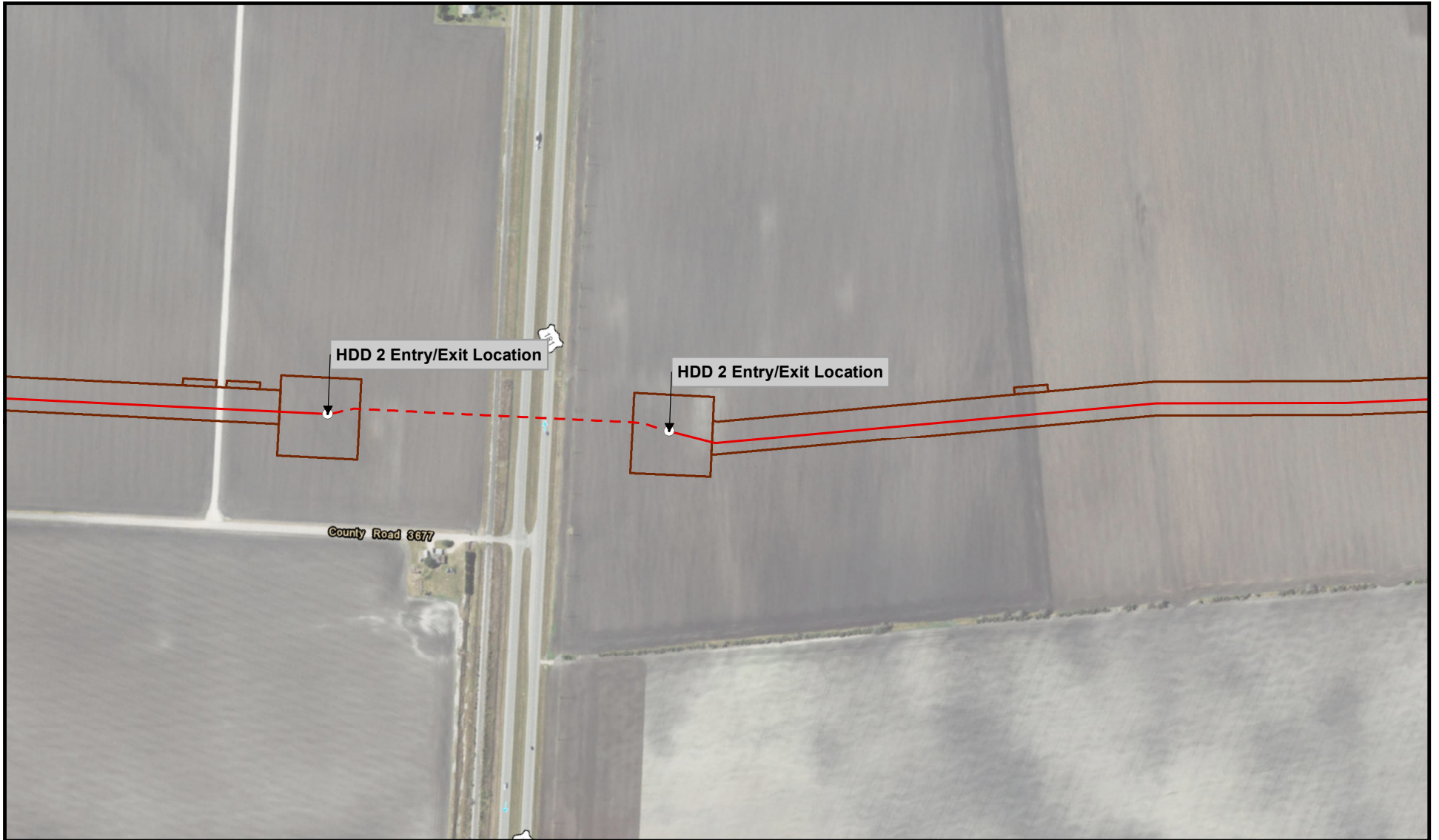
Feet

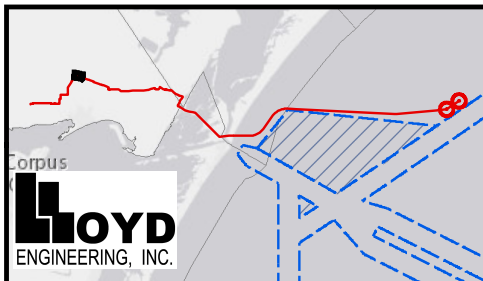
Coordinate System: NAD 1983 2011
 StatePlane Texas South FIPS 4205 Ft US
 Projection: Lambert Conformal Conic
 Datum: NAD 1983 2011
 Units: Foot US

Figure 9
Project Detail Map

USACE Permit Application
 SWG-2019-00174
 Bluewater SPM Project
 San Patricio, Nueces, Aransas County, TX

Date: May 09, 2019





Map Details

HDD Entry/Exit Points	Waterbody
Pipeline Centerline	E2EM Wetland
HDD Pipeline Centerline	E2SS Wetland
Impacted WOUS	E2USP Area
PEM Wetland	M1UB Area
PSS Wetland	Construction Workspace
PUB Pond	

1 inch = 500 feet

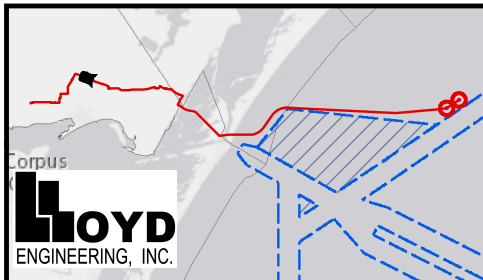
Feet

Coordinate System: NAD 1983 2011
 StatePlane Texas South FIPS 4205 Ft US
 Projection: Lambert Conformal Conic
 Datum: NAD 1983 2011
 Units: Foot US

Figure 11
Project Detail Map

USACE Permit Application
 SWG-2019-00174
 Bluewater SPM Project
 San Patricio, Nueces, Aransas County, TX

Date: May 09, 2019



Map Details

HDD Entry/Exit Points	Waterbody
Pipeline Centerline	E2EM Wetland
HDD Pipeline Centerline	E2SS Wetland
Impacted WOUS	E2USP Area
PEM Wetland	M1UB Area
PSS Wetland	Construction Workspace
PUB Pond	

1 inch = 500 feet

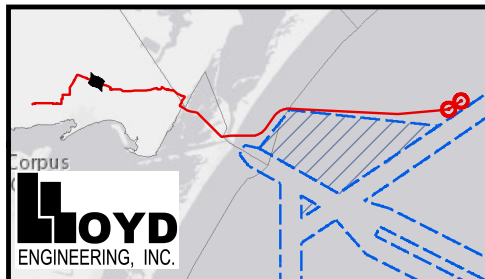
0 250 500
Feet

Coordinate System: NAD 1983 2011
StatePlane Texas South FIPS 4205 Ft US
Projection: Lambert Conformal Conic
Datum: NAD 1983 2011
Units: Foot US

Figure 12
Project Detail Map

USACE Permit Application
SWG-2019-00174
Bluewater SPM Project
San Patricio, Nueces, Aransas County, TX

Date: May 09, 2019



Map Details

○ HDD Entry/Exit Points	Waterbody
— Pipeline Centerline	E2EM Wetland
- - - HDD Pipeline Centerline	E2SS Wetland
Impacted WOUS	E2USP Area
PEM Wetland	M1UB Area
PSS Wetland	Construction Workspace
PUB Pond	

1 inch = 500 feet

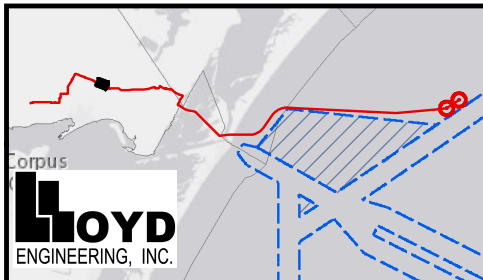
Feet

Coordinate System: NAD 1983 2011
 StatePlane Texas South FIPS 4205 Ft US
 Projection: Lambert Conformal Conic
 Datum: NAD 1983 2011
 Units: Foot US

Figure 13
Project Detail Map

USACE Permit Application
 SWG-2019-00174
 Bluewater SPM Project
 San Patricio, Nueces, Aransas County, TX

Date: May 09, 2019



Map Details

○ HDD Entry/Exit Points	Waterbody
— Pipeline Centerline	E2EM Wetland
- - - HDD Pipeline Centerline	E2SS Wetland
Impacted WOUS	E2USP Area
PEM Wetland	M1UB Area
PSS Wetland	Construction Workspace
PUB Pond	

1 inch = 500 feet

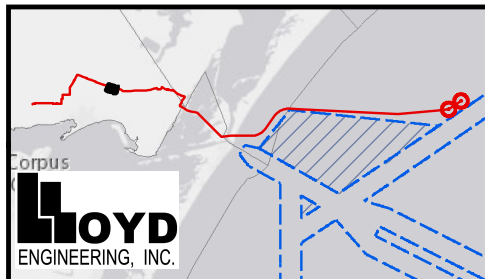
Feet

Coordinate System: NAD 1983 2011
 StatePlane Texas South FIPS 4205 Ft US
 Projection: Lambert Conformal Conic
 Datum: NAD 1983 2011
 Units: Foot US

Figure 14
Project Detail Map

USACE Permit Application
 SWG-2019-00174
 Bluewater SPM Project
 San Patricio, Nueces, Aransas County, TX

Date: May 09, 2019



Map Details

○ HDD Entry/Exit Points	Waterbody
— Pipeline Centerline	E2EM Wetland
- - - HDD Pipeline Centerline	E2SS Wetland
Impacted WOUS	E2USP Area
PEM Wetland	M1UB Area
PSS Wetland	Construction Workspace
PUB Pond	

1 inch = 500 feet

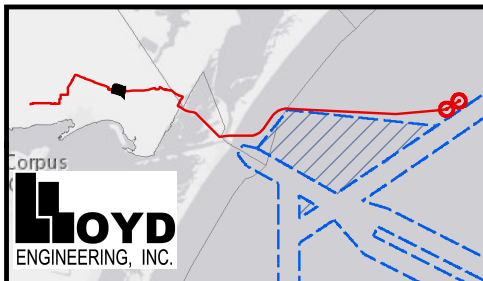
Feet

Coordinate System: NAD 1983 2011
 StatePlane Texas South FIPS 4205 Ft US
 Projection: Lambert Conformal Conic
 Datum: NAD 1983 2011
 Units: Foot US

Figure 15
Project Detail Map

USACE Permit Application
 SWG-2019-00174
 Bluewater SPM Project
 San Patricio, Nueces, Aransas County, TX

Date: May 09, 2019



Map Details

HDD Entry/Exit Points	Waterbody
Pipeline Centerline	E2EM Wetland
HDD Pipeline Centerline	E2SS Wetland
Impacted WOUS	E2USP Area
PEM Wetland	M1UB Area
PSS Wetland	Construction Workspace
PUB Pond	

1 inch = 500 feet

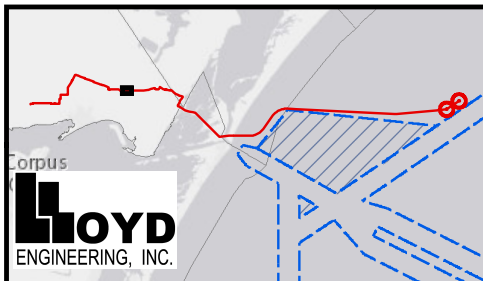
Feet

Coordinate System: NAD 1983 2011
 StatePlane Texas South FIPS 4205 Ft US
 Projection: Lambert Conformal Conic
 Datum: NAD 1983 2011
 Units: Foot US

Figure 16
Project Detail Map

USACE Permit Application
 SWG-2019-00174
 Bluewater SPM Project
 San Patricio, Nueces, Aransas County, TX

Date: May 09, 2019



Map Details

○ HDD Entry/Exit Points	Waterbody
— Pipeline Centerline	E2EM Wetland
- - - HDD Pipeline Centerline	E2SS Wetland
Impacted WOUS	E2USP Area
PEM Wetland	M1UB Area
PSS Wetland	Construction Workspace
PUB Pond	

1 inch = 500 feet

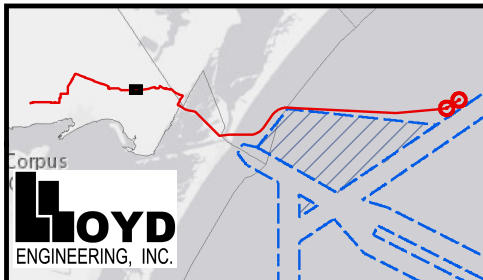
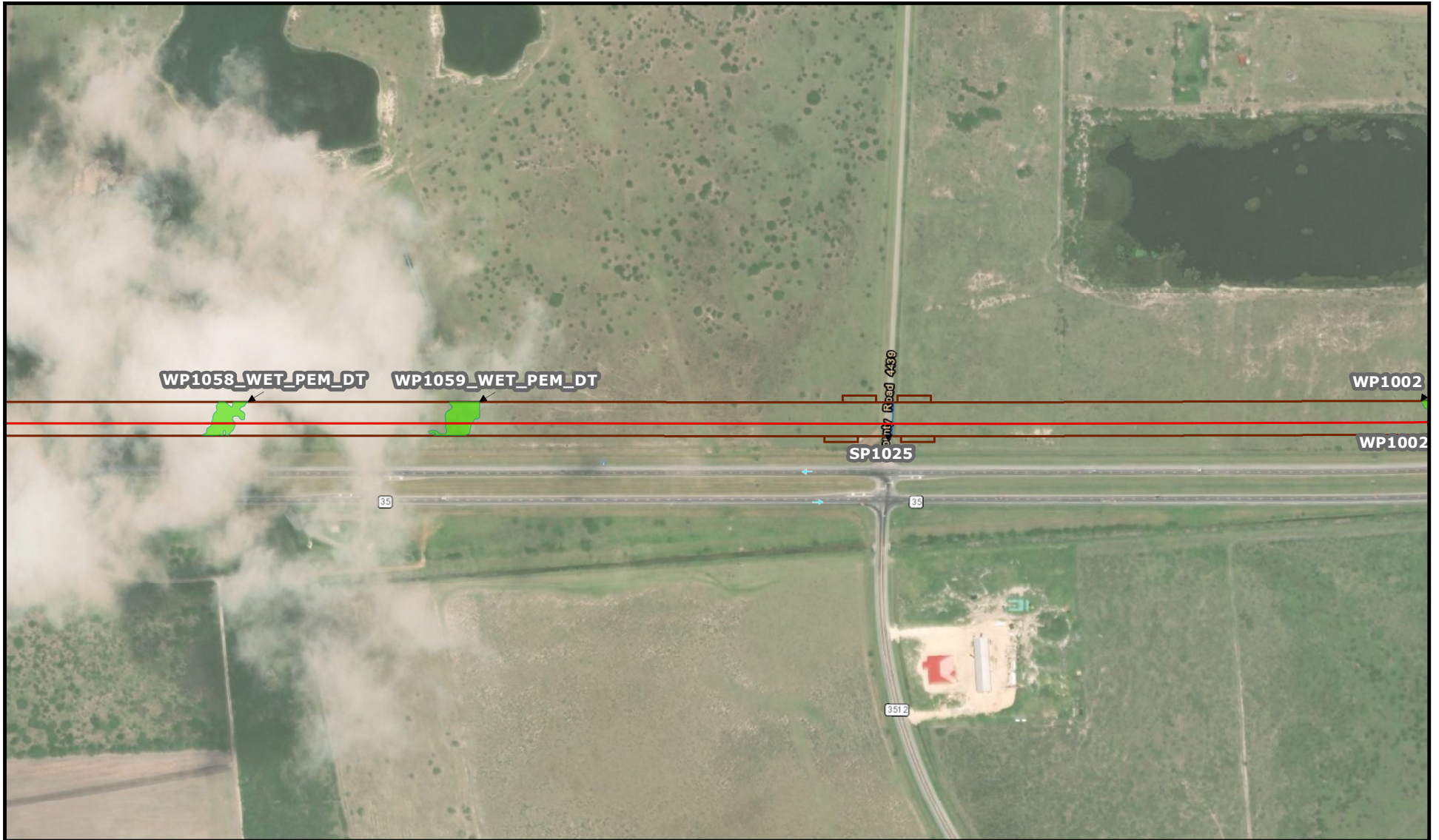
Feet

Coordinate System: NAD 1983 2011
 StatePlane Texas South FIPS 4205 Ft US
 Projection: Lambert Conformal Conic
 Datum: NAD 1983 2011
 Units: Foot US

Figure 17
Project Detail Map

USACE Permit Application
 SWG-2019-00174
 Bluewater SPM Project
 San Patricio, Nueces, Aransas County, TX

Date: May 09, 2019



Map Details

	HDD Entry/Exit Points		Waterbody
	Pipeline Centerline		E2EM Wetland
	HDD Pipeline Centerline		E2SS Wetland
Impacted WOUS			E2USP Area
	PEM Wetland		M1UB Area
	PSS Wetland		Construction Workspace
	PUB Pond		

1 inch = 500 feet

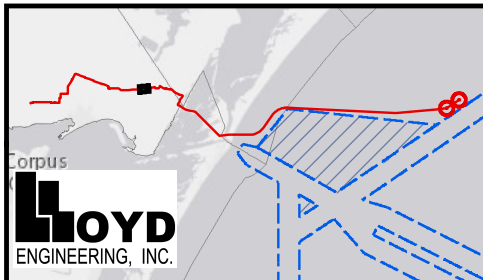
Feet

Coordinate System: NAD 1983 2011
 StatePlane Texas South FIPS 4205 Ft US
 Projection: Lambert Conformal Conic
 Datum: NAD 1983 2011
 Units: Foot US

Figure 18
Project Detail Map

USACE Permit Application
 SWG-2019-00174
 Bluewater SPM Project
 San Patricio, Nueces, Aransas County, TX

Date: May 09, 2019



Map Details

HDD Entry/Exit Points	Waterbody
Pipeline Centerline	E2EM Wetland
HDD Pipeline Centerline	E2SS Wetland
Impacted WOUS	E2USP Area
PEM Wetland	M1UB Area
PSS Wetland	Construction Workspace
PUB Pond	

1 inch = 500 feet

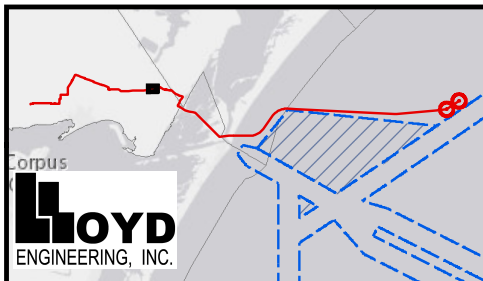
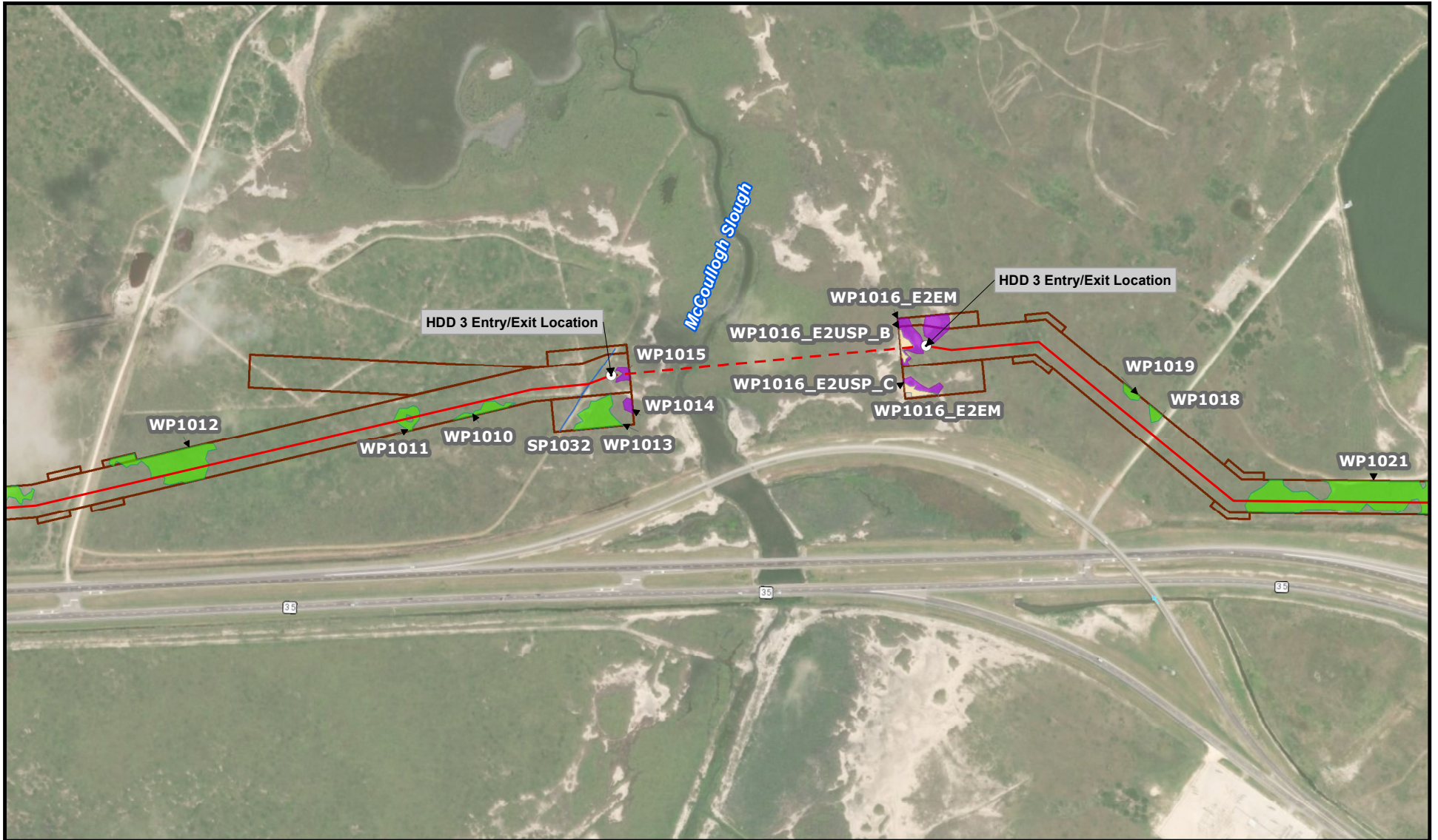
Feet

Coordinate System: NAD 1983 2011
 StatePlane Texas South FIPS 4205 Ft US
 Projection: Lambert Conformal Conic
 Datum: NAD 1983 2011
 Units: Foot US

Figure 19
Project Detail Map

USACE Permit Application
 SWG-2019-00174
 Bluewater SPM Project
 San Patricio, Nueces, Aransas County, TX

Date: May 09, 2019



LOYD
ENGINEERING, INC.

Map Details	
	HDD Entry/Exit Points
	Pipeline Centerline
	HDD Pipeline Centerline
	PEM Wetland
	PSS Wetland
	PUB Pond
	Waterbody
	E2EM Wetland
	E2SS Wetland
	E2USP Area
	M1UB Area
	Construction Workspace

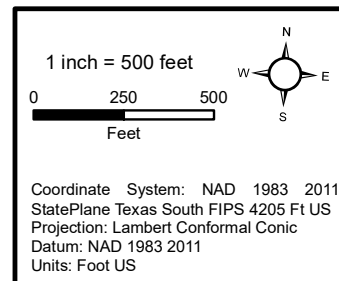
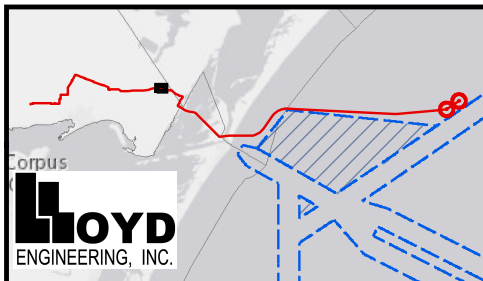


Figure 20
Project Detail Map

USACE Permit Application
 SWG-2019-00174
 Bluewater SPM Project
 San Patricio, Nueces, Aransas County, TX

Date: May 09, 2019



Map Details

○ HDD Entry/Exit Points	Waterbody
— Pipeline Centerline	E2EM Wetland
- - - HDD Pipeline Centerline	E2SS Wetland
Impacted WOUS	E2USP Area
PEM Wetland	M1UB Area
PSS Wetland	Construction Workspace
PUB Pond	

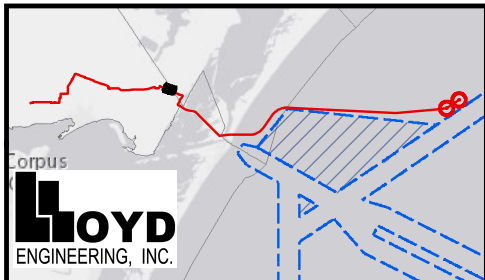
1 inch = 500 feet

Coordinate System: NAD 1983 2011
 StatePlane Texas South FIPS 4205 Ft US
 Projection: Lambert Conformal Conic
 Datum: NAD 1983 2011
 Units: Foot US

Figure 21
Project Detail Map

USACE Permit Application
 SWG-2019-00174
 Bluewater SPM Project
 San Patricio, Nueces, Aransas County, TX

Date: May 09, 2019



LOYD
ENGINEERING, INC.

Map Details

	HDD Entry/Exit Points		Waterbody
	Pipeline Centerline		E2EM Wetland
	HDD Pipeline Centerline		E2SS Wetland
Impacted WOUS			E2USP Area
	PEM Wetland		M1UB Area
	PSS Wetland		Construction Workspace
	PUB Pond		

1 inch = 500 feet

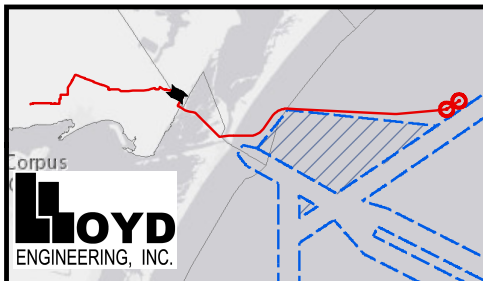
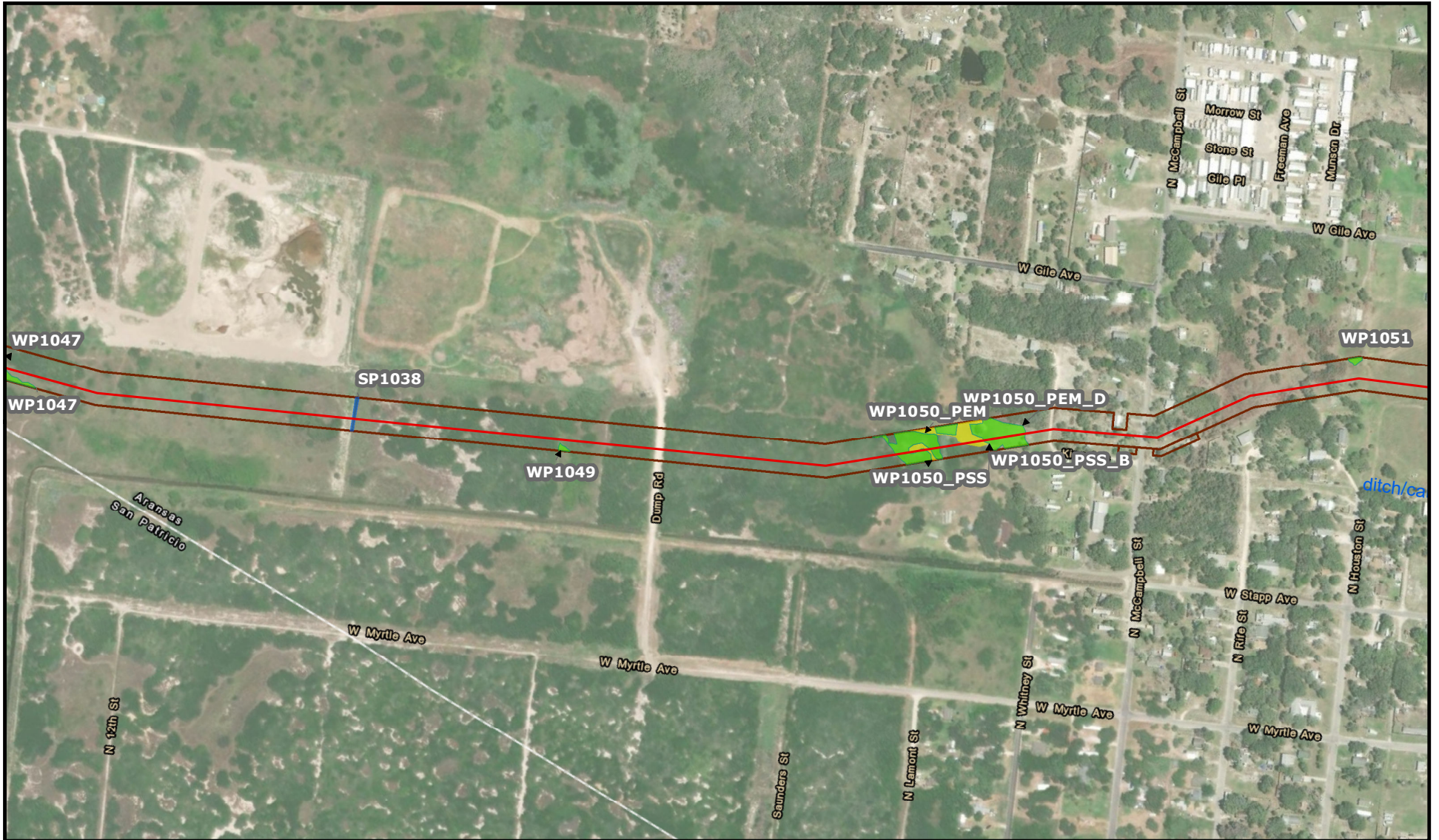
Feet

Coordinate System: NAD 1983 2011
 StatePlane Texas South FIPS 4205 Ft US
 Projection: Lambert Conformal Conic
 Datum: NAD 1983 2011
 Units: Foot US

Figure 22
Project Detail Map

USACE Permit Application
 SWG-2019-00174
 Bluewater SPM Project
 San Patricio, Nueces, Aransas County, TX

Date: May 09, 2019



Map Details

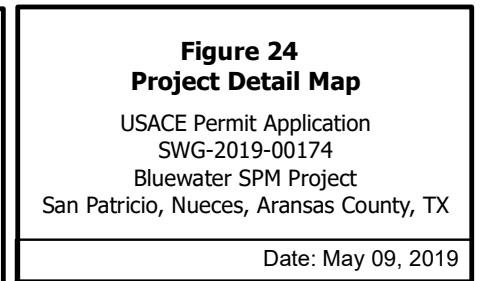
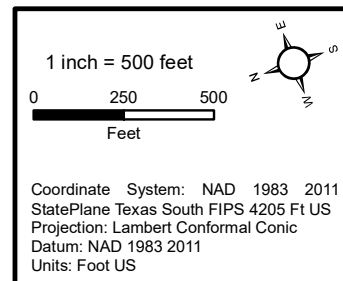
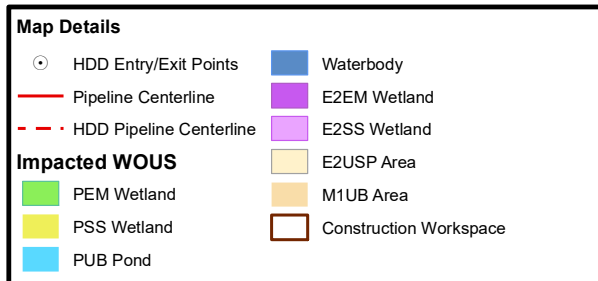
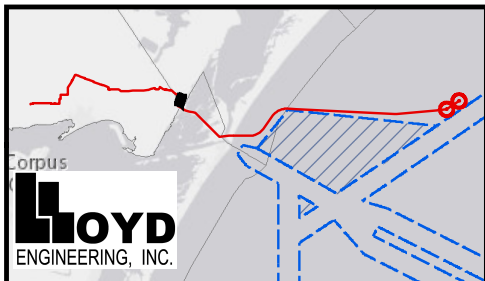
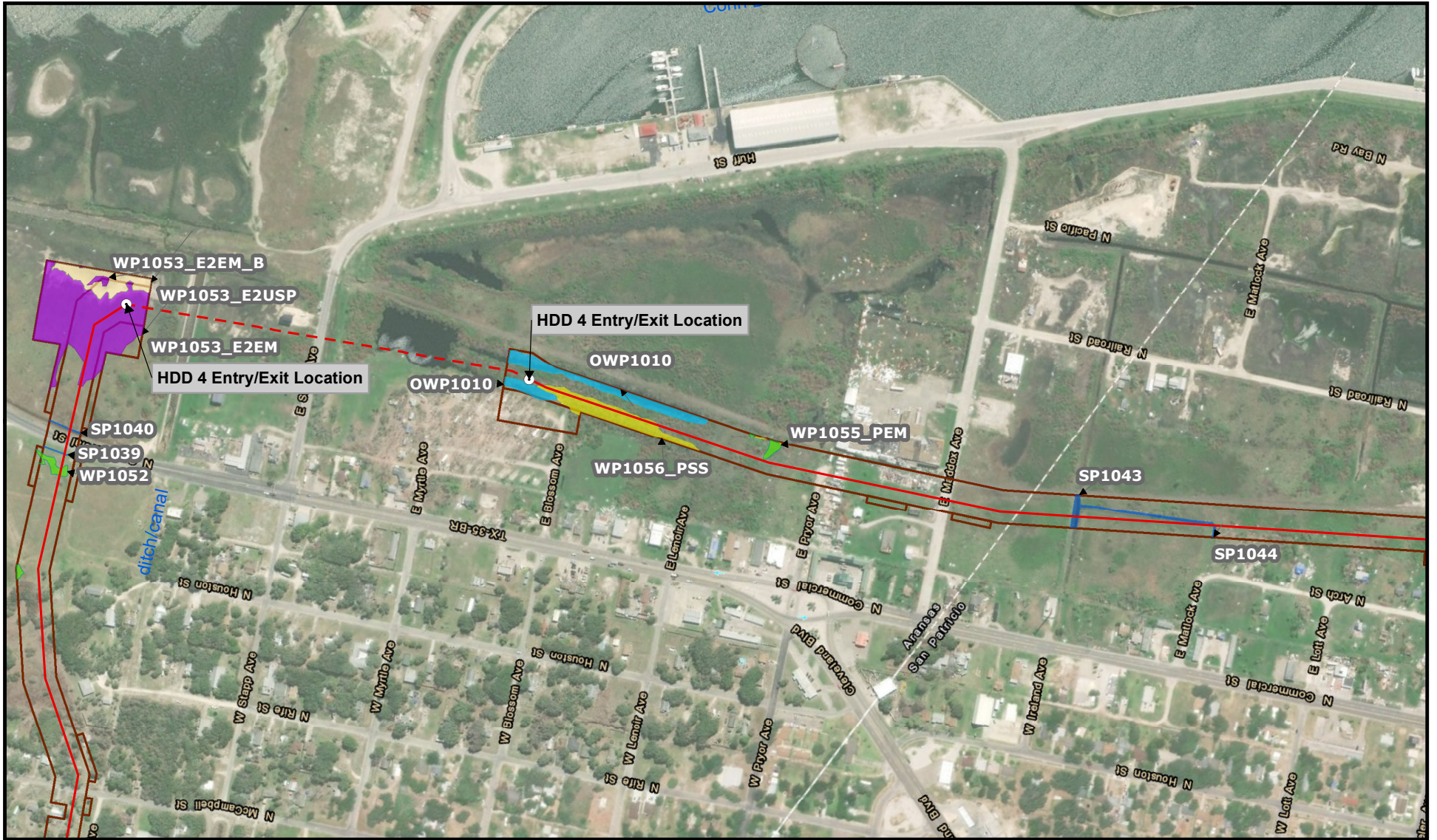
HDD Entry/Exit Points	Waterbody
Pipeline Centerline	E2EM Wetland
HDD Pipeline Centerline	E2SS Wetland
Impacted WOUS	E2USP Area
PEM Wetland	M1UB Area
PSS Wetland	Construction Workspace
PUB Pond	

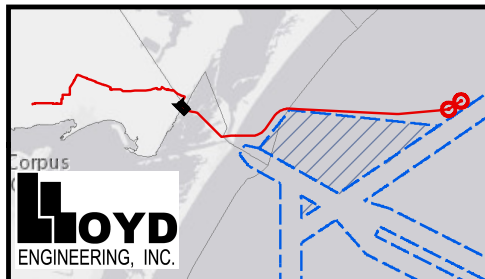
1 inch = 500 feet

Coordinate System: NAD 1983 2011
 StatePlane Texas South FIPS 4205 Ft US
 Projection: Lambert Conformal Conic
 Datum: NAD 1983 2011
 Units: Foot US

Figure 23
Project Detail Map
 USACE Permit Application
 SWG-2019-00174
 Bluewater SPM Project
 San Patricio, Nueces, Aransas County, TX

Date: May 09, 2019





Bluewater Deepwater Port

LOYD
ENGINEERING, INC.

Map Details		Aquatic Resources	
○ HDD Entry/Exit Points	■ PUB Pond	■ Algae Bed	■ Intertidal Wetland
— Pipeline Centerline	■ Waterbody	■ E2EM Wetland	■ Scattered Oyster Shell
- - - HDD Pipeline Centerline	■ E2SS Wetland	■ E2USP Area	■ Seagrass
▭ Construction Workspace	■ M1UB Area	■ Shell Hash	
Impacted WOUS			
■ PEM Wetland			
■ PSS Wetland			

1 inch = 500 feet

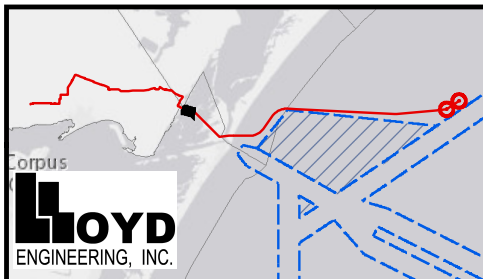
0 250 500
Feet

Coordinate System: NAD 1983 2011
StatePlane Texas South FIPS 4205 Ft US
Projection: Lambert Conformal Conic
Datum: NAD 1983 2011
Units: Foot US

Figure 25
Project Detail Map

USACE Permit Application
SWG-2019-00174
Bluewater SPM Project
San Patricio, Nueces, Aransas County, TX

Date: May 09, 2019



Map Details		
○ HDD Entry/Exit Points	■ PUB Pond	Aquatic Resources
— Pipeline Centerline	■ Waterbody	■ Algae Bed
- - - HDD Pipeline Centerline	■ E2EM Wetland	■ Intertidal Wetland
▭ Construction Workspace	■ E2SS Wetland	■ Scattered Oyster Shell
Impacted WOUS	■ E2USP Area	■ Seagrass
■ PEM Wetland	■ M1UB Area	■ Shell Hash
■ PSS Wetland		

1 inch = 500 feet

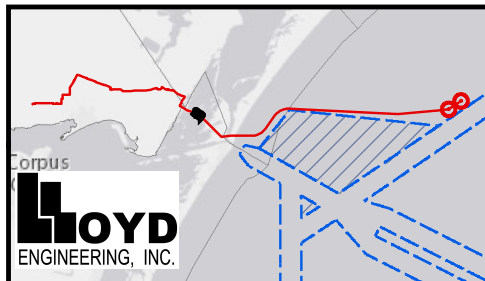
Feet

Coordinate System: NAD 1983 2011
 StatePlane Texas South FIPS 4205 Ft US
 Projection: Lambert Conformal Conic
 Datum: NAD 1983 2011
 Units: Foot US

Figure 26
Project Detail Map

USACE Permit Application
 SWG-2019-00174
 Bluewater SPM Project
 San Patricio, Nueces, Aransas County, TX

Date: May 09, 2019



Map Details		
○ HDD Entry/Exit Points	■ PUB Pond	Aquatic Resources
— Pipeline Centerline	■ Waterbody	■ Algae Bed
- - - HDD Pipeline Centerline	■ E2EM Wetland	■ Intertidal Wetland
▭ Construction Workspace	■ E2SS Wetland	■ Scattered Oyster Shell
Impacted WOUS	■ E2USP Area	■ Seagrass
■ PEM Wetland	■ M1UB Area	■ Shell Hash
■ PSS Wetland		

1 inch = 500 feet

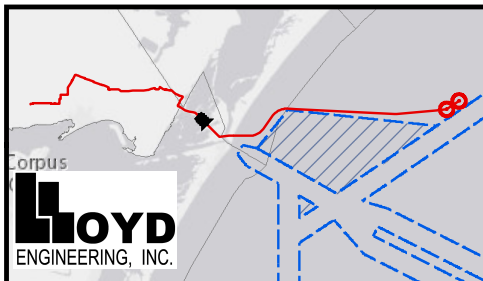
0 250 500
Feet

Coordinate System: NAD 1983 2011
StatePlane Texas South FIPS 4205 Ft US
Projection: Lambert Conformal Conic
Datum: NAD 1983 2011
Units: Foot US

Figure 27
Project Detail Map

USACE Permit Application
SWG-2019-00174
Bluewater SPM Project
San Patricio, Nueces, Aransas County, TX

Date: May 09, 2019



Map Details		
○ HDD Entry/Exit Points	■ PUB Pond	Aquatic Resources
— Pipeline Centerline	■ Waterbody	■ Algae Bed
- - - HDD Pipeline Centerline	■ E2EM Wetland	■ Intertidal Wetland
▭ Construction Workspace	■ E2SS Wetland	■ Scattered Oyster Shell
Impacted WOUS	■ E2USP Area	■ Seagrass
■ PEM Wetland	■ M1UB Area	■ Shell Hash
■ PSS Wetland		

1 inch = 500 feet

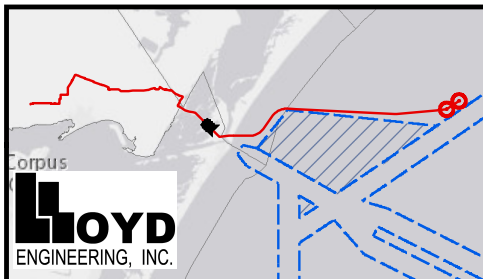
0 250 500
Feet

Coordinate System: NAD 1983 2011
 StatePlane Texas South FIPS 4205 Ft US
 Projection: Lambert Conformal Conic
 Datum: NAD 1983 2011
 Units: Foot US

Figure 28
Project Detail Map

USACE Permit Application
 SWG-2019-00174
 Bluewater SPM Project
 San Patricio, Nueces, Aransas County, TX

Date: May 09, 2019



Map Details		
○ HDD Entry/Exit Points	■ PUB Pond	Aquatic Resources
— Pipeline Centerline	■ Waterbody	■ Algae Bed
- - - HDD Pipeline Centerline	■ E2EM Wetland	■ Intertidal Wetland
□ Construction Workspace	■ E2SS Wetland	■ Scattered Oyster Shell
Impacted WOUS	■ E2USP Area	■ Seagrass
■ PEM Wetland	■ M1UB Area	■ Shell Hash
■ PSS Wetland		

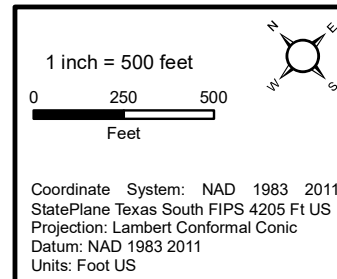
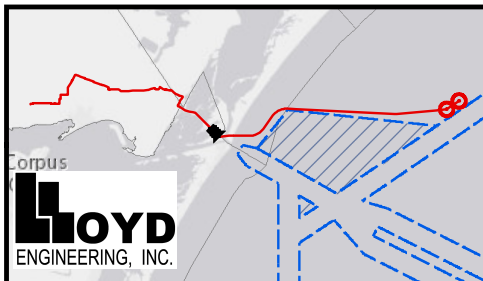
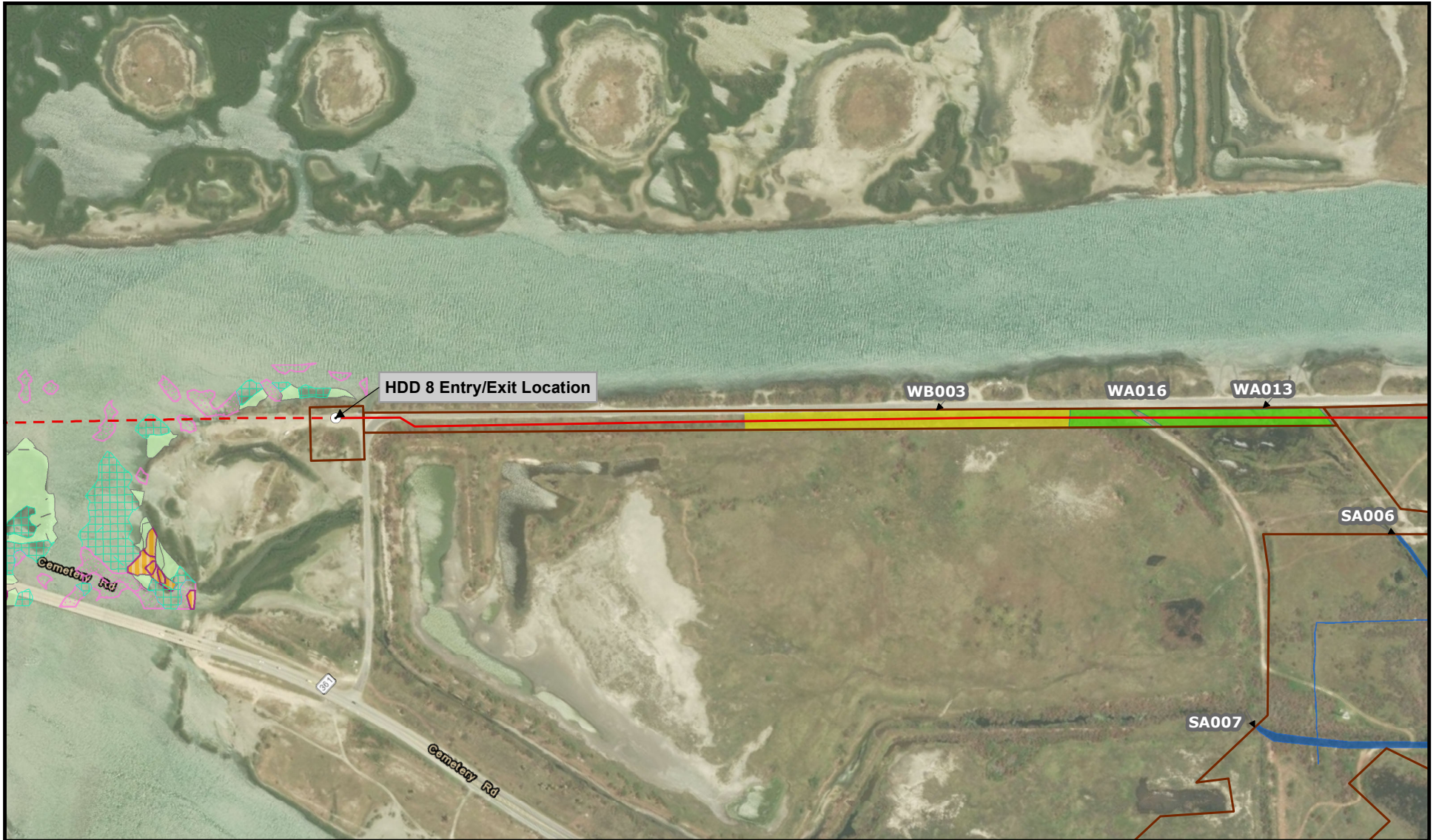


Figure 29
Project Detail Map
 USACE Permit Application
 SWG-2019-00174
 Bluewater SPM Project
 San Patricio, Nueces, Aransas County, TX

Date: May 09, 2019



Bluewater Deepwater Port

Map Details		
○ HDD Entry/Exit Points	■ PUB Pond	Aquatic Resources
— Pipeline Centerline	■ Waterbody	■ Algae Bed
- - - HDD Pipeline Centerline	■ E2EM Wetland	■ Intertidal Wetland
□ Construction Workspace	■ E2SS Wetland	■ Scattered Oyster Shell
Impacted WOUS	■ E2USP Area	■ Seagrass
■ PEM Wetland	■ M1UB Area	■ Shell Hash
■ PSS Wetland		

1 inch = 500 feet

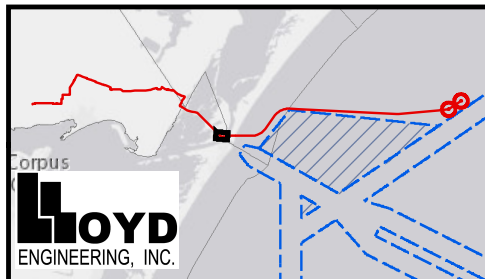
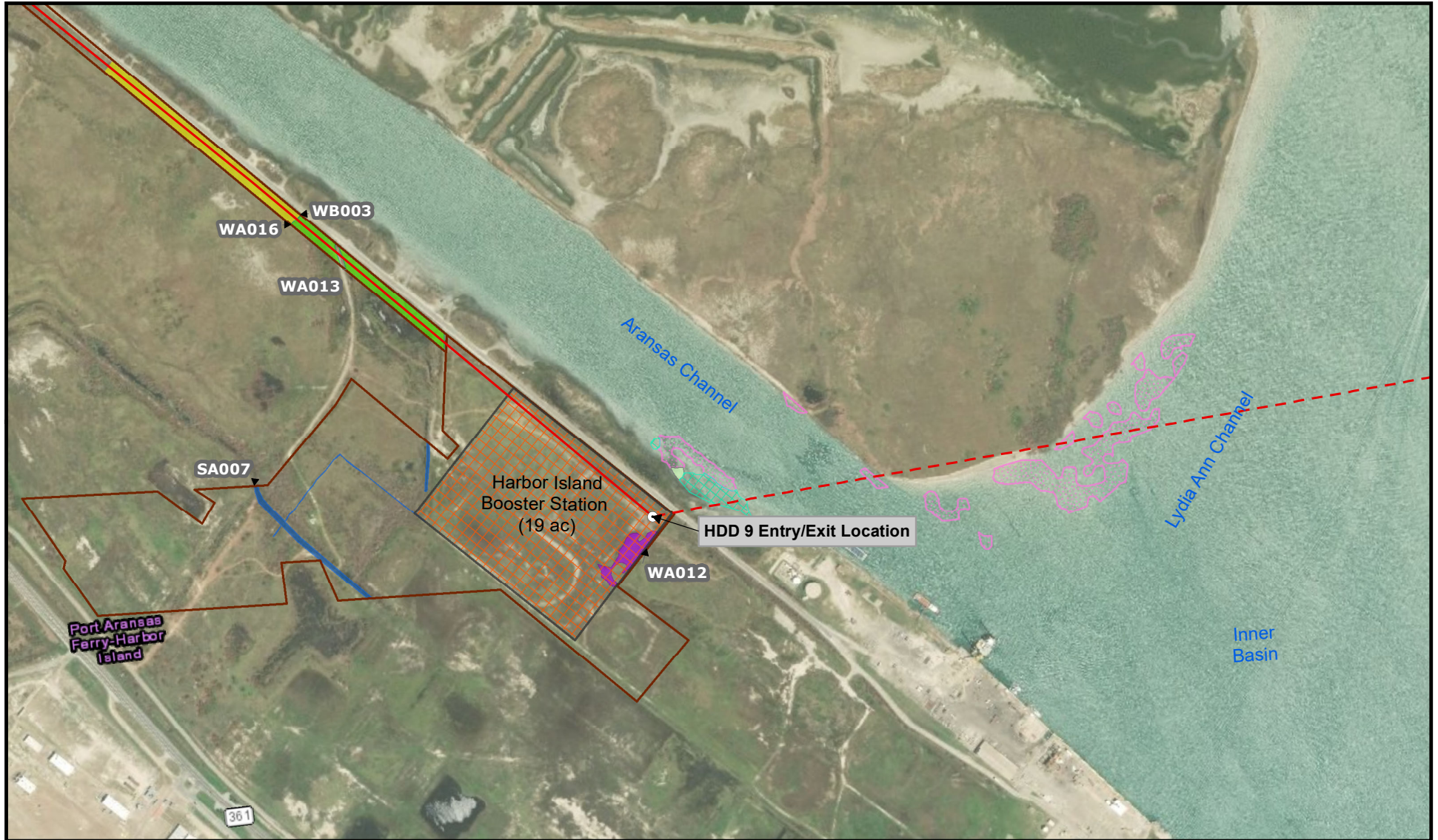
Feet

Coordinate System: NAD 1983 2011
 StatePlane Texas South FIPS 4205 Ft US
 Projection: Lambert Conformal Conic
 Datum: NAD 1983 2011
 Units: Foot US

Figure 30
Project Detail Map

USACE Permit Application
 SWG-2019-00174
 Bluewater SPM Project
 San Patricio, Nueces, Aransas County, TX

Date: May 09, 2019



Map Details		
		Aquatic Resources
Impacted WOUS		

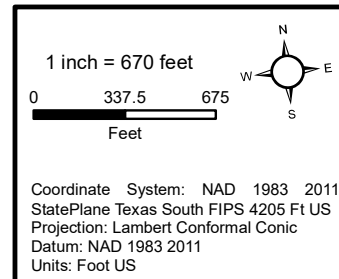
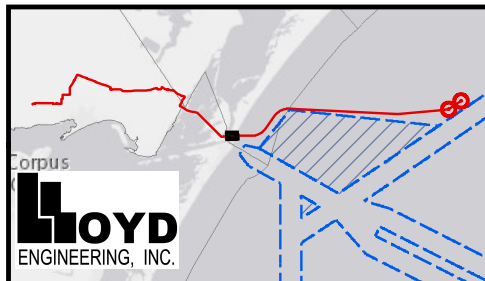


Figure 31
Project Detail Map
 USACE Permit Application
 SWG-2019-00174
 Bluewater SPM Project
 San Patricio, Nueces, Aransas County, TX

Date: May 09, 2019



Map Details		
HDD Entry/Exit Points	PUB Pond	Aquatic Resources
Pipeline Centerline	Waterbody	Algae Bed
HDD Pipeline Centerline	E2EM Wetland	Intertidal Wetland
Construction Workspace	E2SS Wetland	Scattered Oyster Shell
Impacted WOUS	E2USP Area	Seagrass
PEM Wetland	M1UB Area	Shell Hash
PSS Wetland		

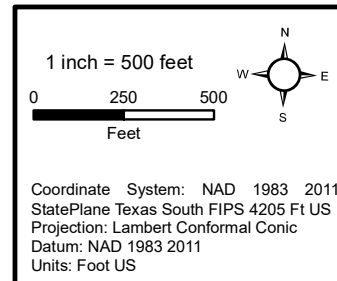
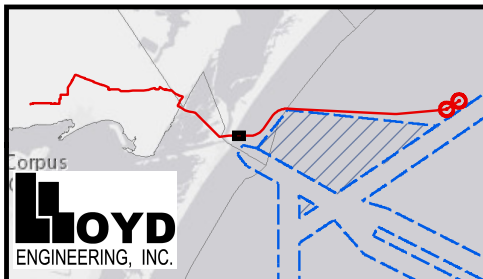


Figure 32
Project Detail Map
 USACE Permit Application
 SWG-2019-00174
 Bluewater SPM Project
 San Patricio, Nueces, Aransas County, TX

Date: May 09, 2019



Map Details		
○ HDD Entry/Exit Points	■ PUB Pond	Aquatic Resources
— Pipeline Centerline	■ Waterbody	■ Algae Bed
- - - HDD Pipeline Centerline	■ E2EM Wetland	■ Intertidal Wetland
▭ Construction Workspace	■ E2SS Wetland	■ Scattered Oyster Shell
Impacted WOUS	■ E2USP Area	■ Seagrass
■ PEM Wetland	■ M1UB Area	■ Shell Hash
■ PSS Wetland		

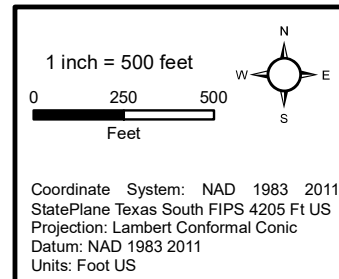
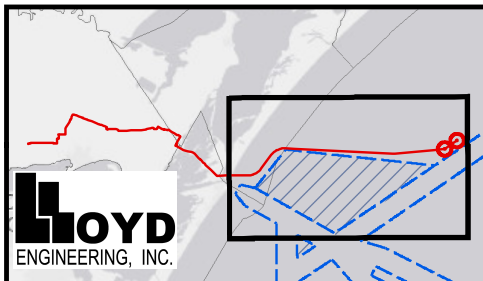
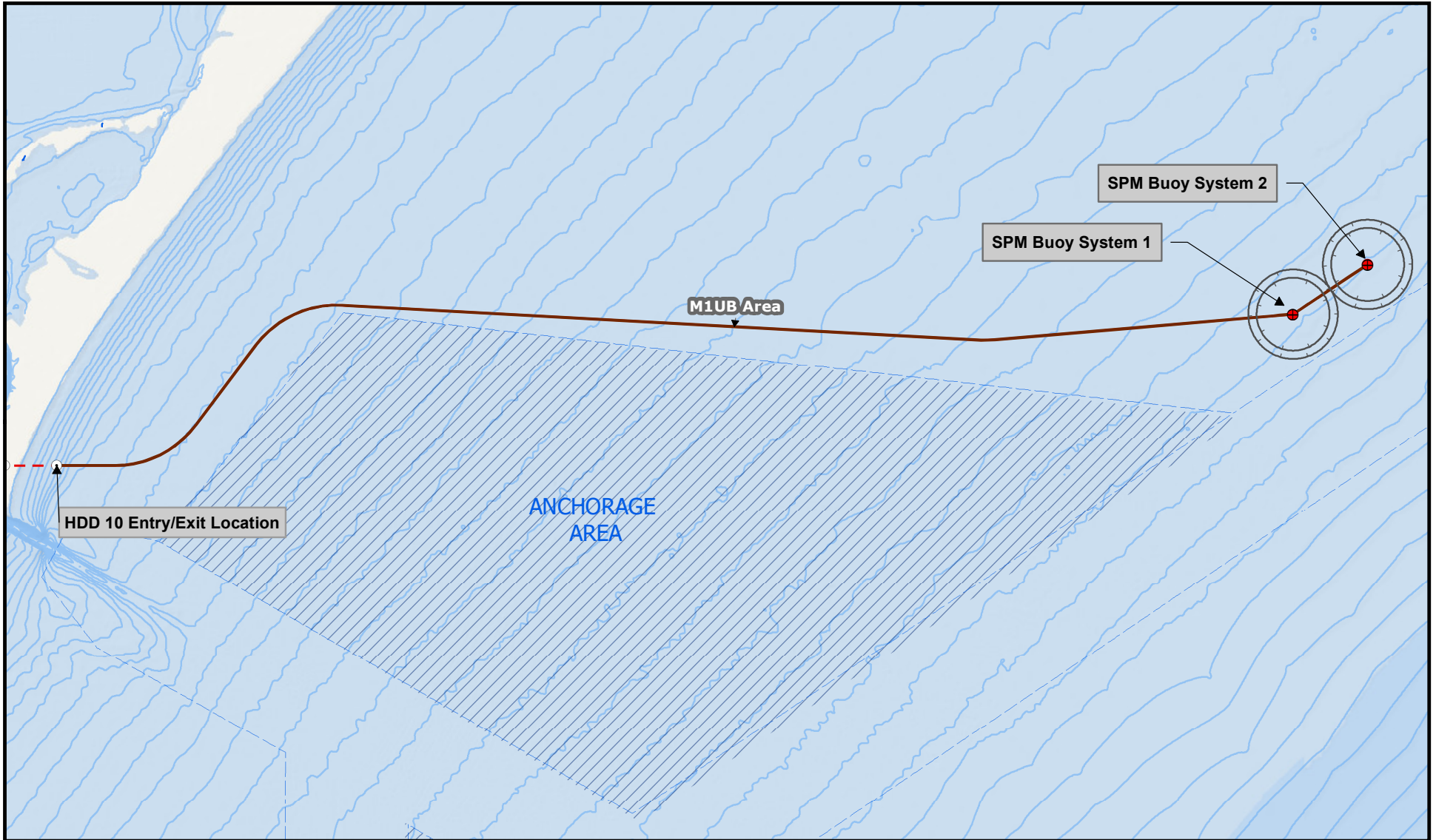


Figure 33
Project Detail Map
 USACE Permit Application
 SWG-2019-00174
 Bluewater SPM Project
 San Patricio, Nueces, Aransas County, TX

Date: May 09, 2019



Map Details

- SPM Buoy System
- SPM Buoy ATBA and Safety Zones
- HDD Entry/Exit Points
- ▭ Construction Workspace
- Pipeline Centerline
- - - HDD Pipeline Centerline
- - - Navigational Fairways
- ▨ Anchorage Areas
- Bathymetry Contours (m)

Impacted WOUS

- M1UB Area

1 inch = 2.5 miles

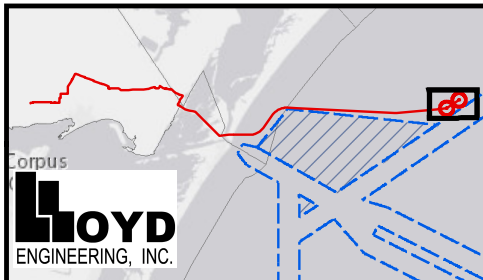
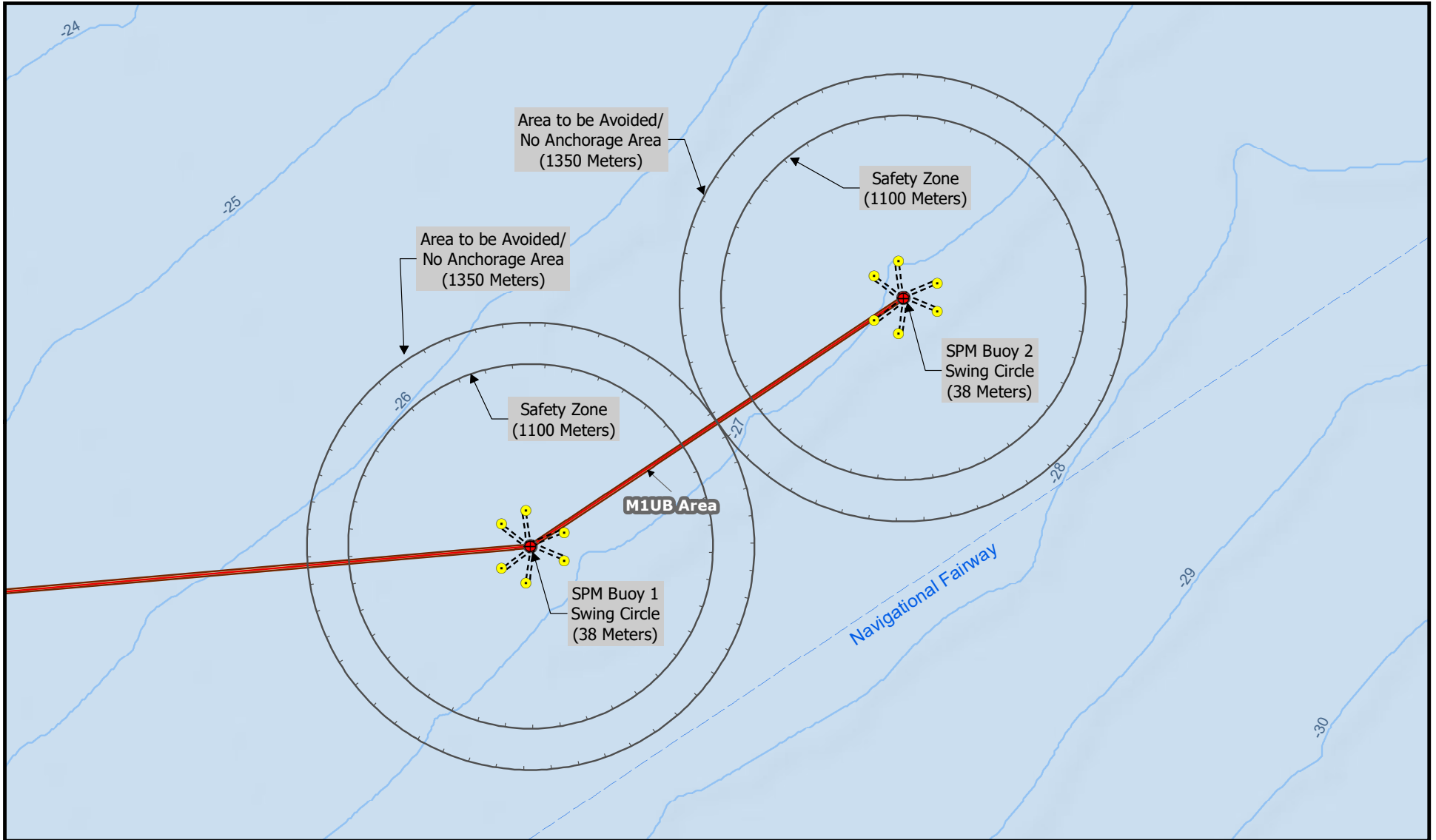
Miles

Coordinate System: NAD 1983 2011
 StatePlane Texas South FIPS 4205 Ft US
 Projection: Lambert Conformal Conic
 Datum: NAD 1983 2011
 Units: Foot US

Figure 34
Project Detail Map

USACE Permit Application
 SWG-2019-00174
 Bluewater SPM Project
 San Patricio, Nueces, Aransas County, TX

Date: May 09, 2019



Map Details

● SPM Buoy System	▭ Construction Workspace
● CALM Anchor Pile Location	- - - Navigational Fairways
- - - - CALM Anchor Chain	- - - Bathymetry Contours (m)
— SPM Buoy ATBA and Safety Zones	Impacted WOUS
— Pipeline Centerline	■ M1UB Area

1 inch = 0.5 miles

0 0.25 0.5
Miles

Coordinate System: NAD 1983 2011
StatePlane Texas South FIPS 4205 Ft US
Projection: Lambert Conformal Conic
Datum: NAD 1983 2011
Units: Foot US

Figure 35
Project Detail Map

USACE Permit Application
SWG-2019-00174
Bluewater SPM Project
San Patricio, Nueces, Aransas County, TX

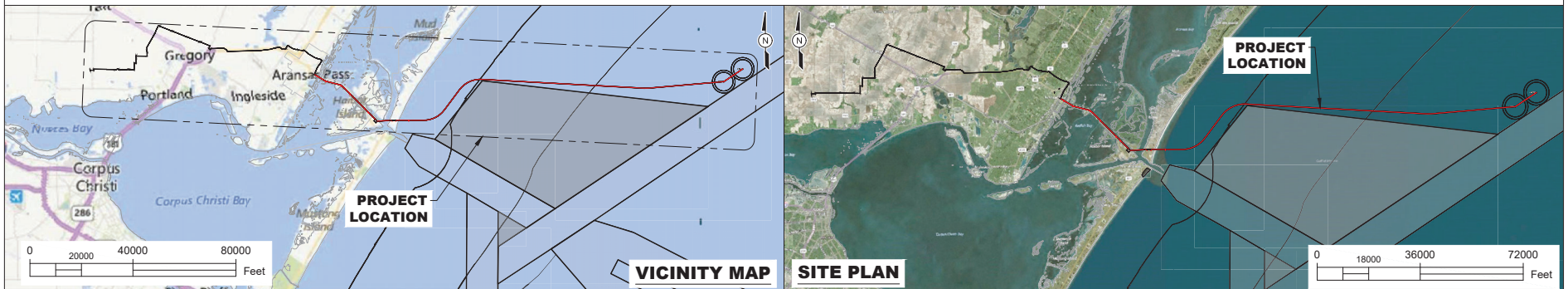
Date: May 09, 2019

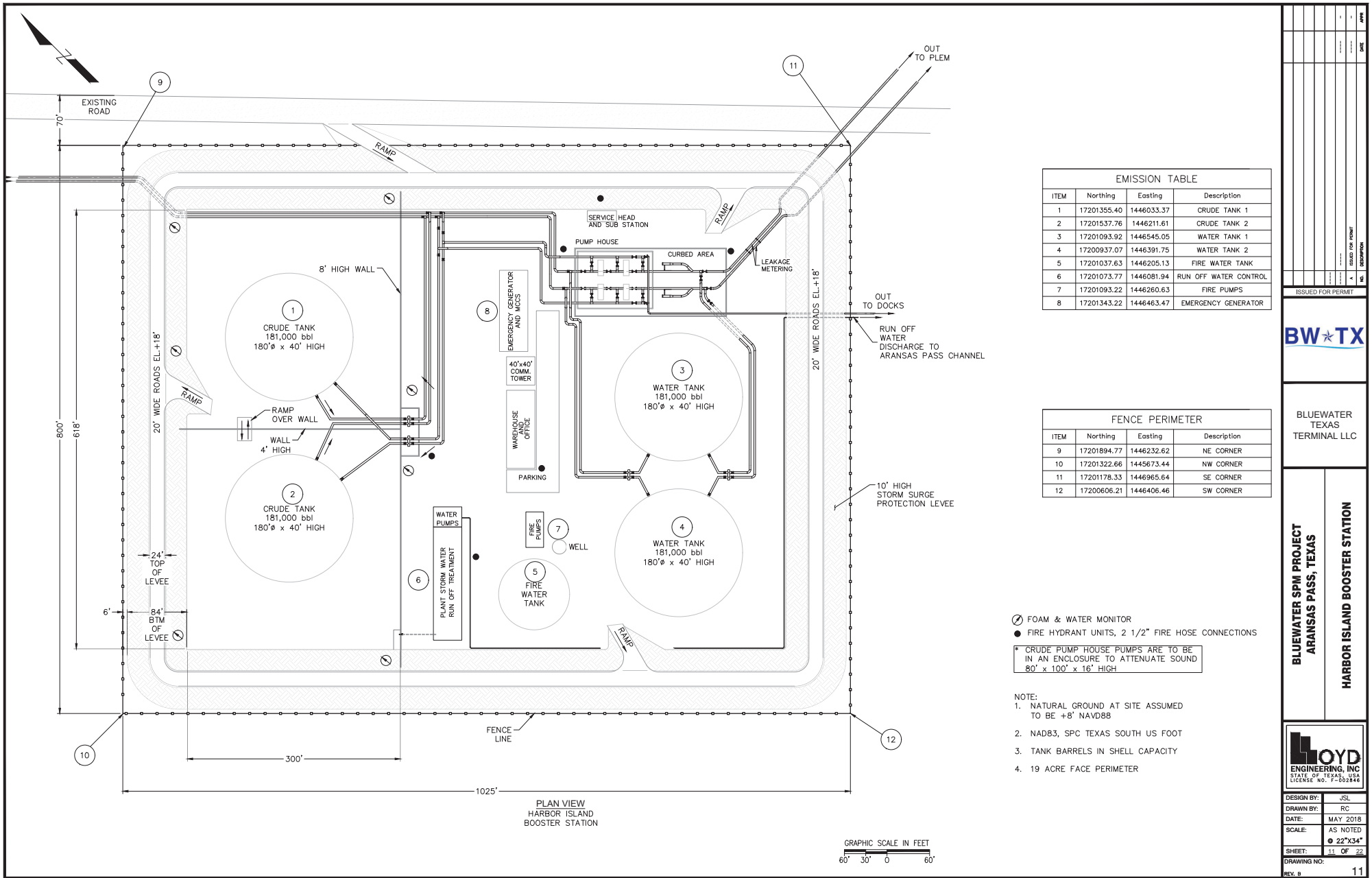
Engineering Drawings



ARANSAS PASS, TEXAS
BLUEWATER SPM PROJECT

ISSUED FOR PERMIT
MAY 2019





DATE	ISSUED FOR PERMIT	NO.	DESCRIPTION

BW*TX

BLUEWATER TEXAS TERMINAL LLC

BLUEWATER SPM PROJECT
ARANSAS PASS, TEXAS

HARBOR ISLAND BOOSTER STATION

LOYD
ENGINEERING, INC
STATE OF TEXAS, USA
LICENSE NO. F-202844

DESIGN BY:	JSL
DRAWN BY:	RC
DATE:	MAY 2018
SCALE:	AS NOTED
SHEET:	11 OF 22

DRAWING NO. REV. B

11

